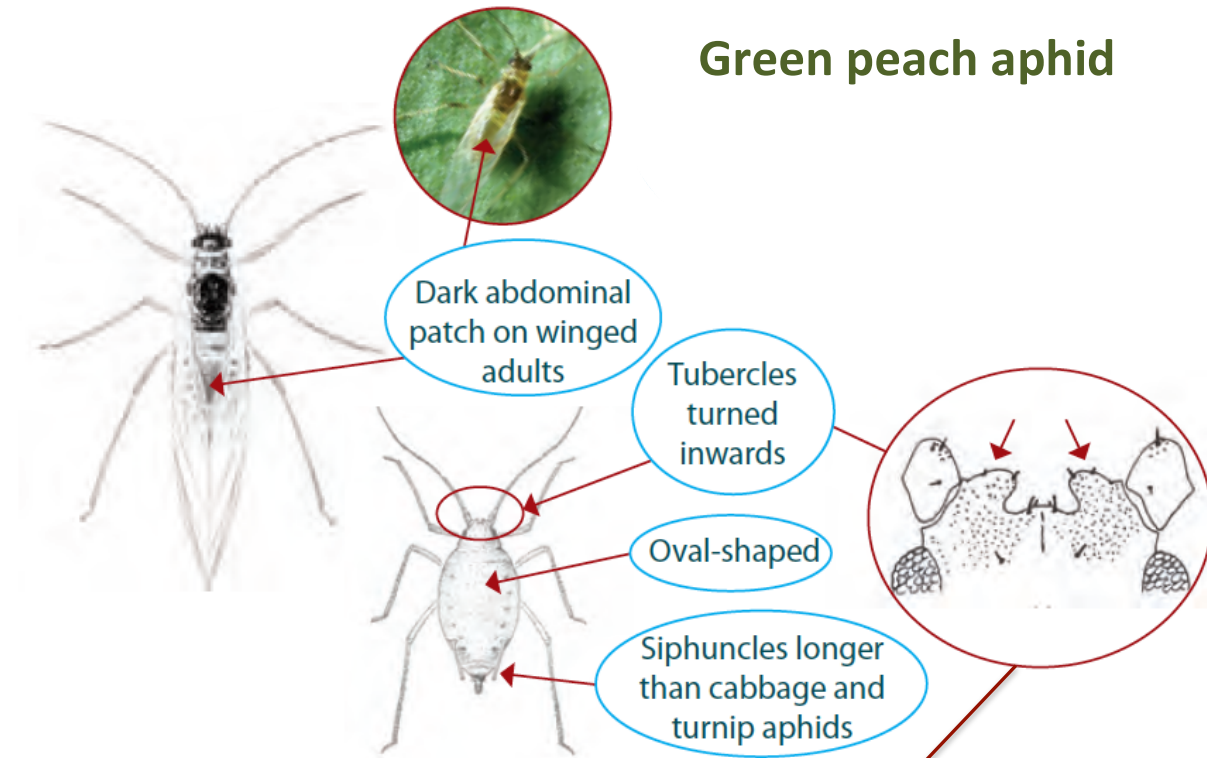


# A pictorial guide to distinguish winged aphids in canola and pulses

## Green peach aphid

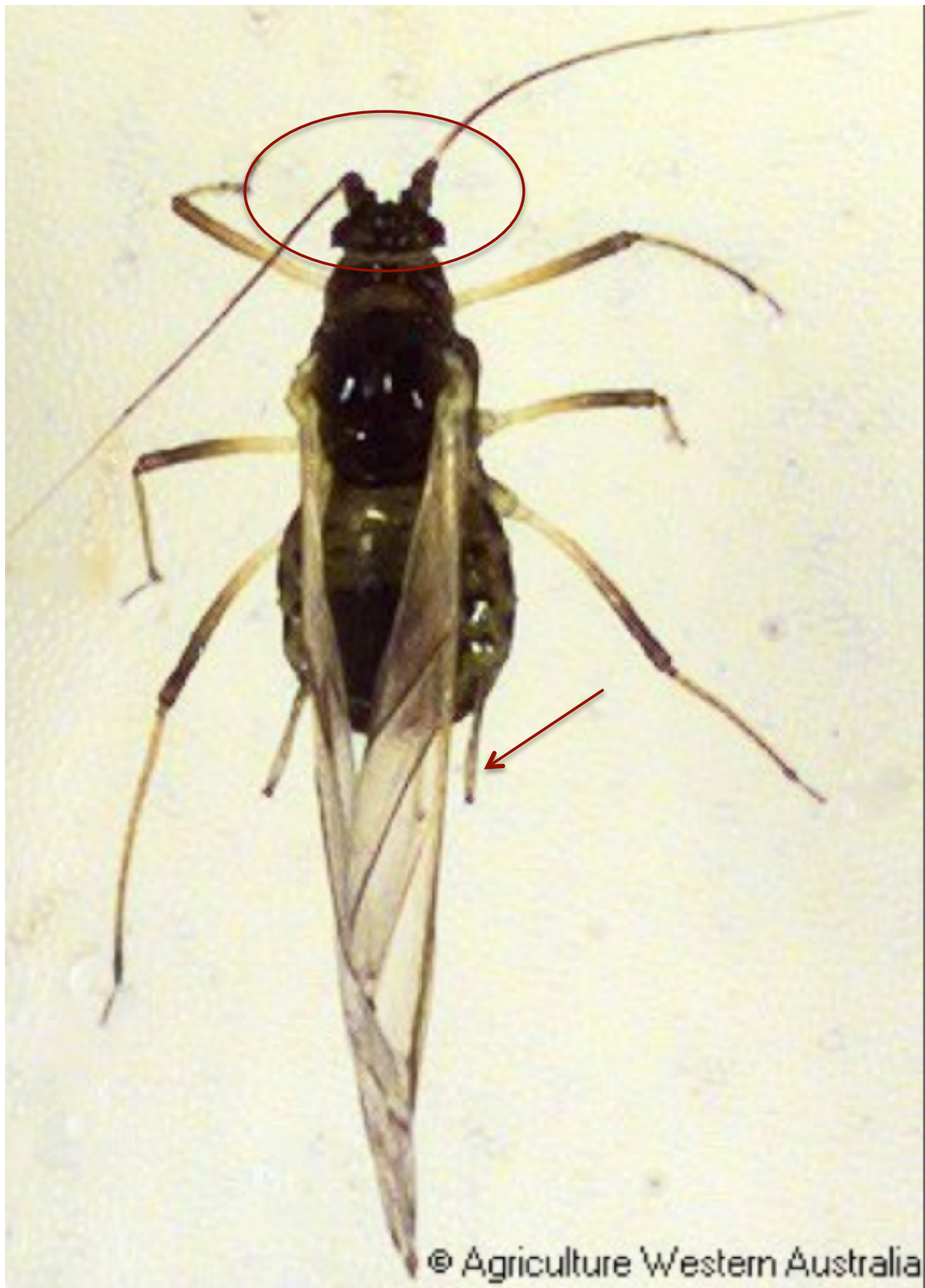


In particular, in comparison to other aphids, look for:

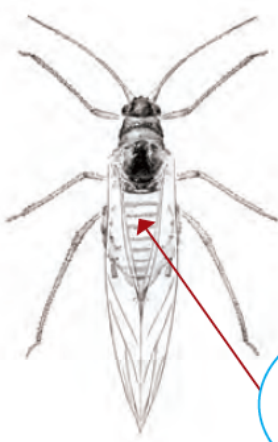
- turned-in tubercles (between antennae);
- dark patch (not bars) on abdomen
- longer siphuncles



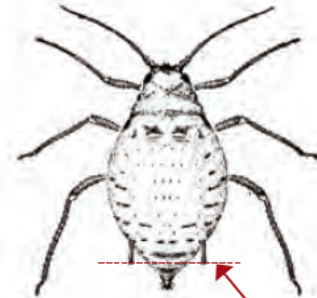
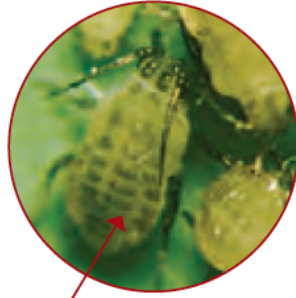
## Green peach aphid (cont)



## Turnip aphid



Dark bars on abdomen (dorsal) of adults and later instars



Tips of siphuncles nearly reach base of cauda



<http://www.nbaii.res.in/Aphids/images/Lipaphiserysimi/>

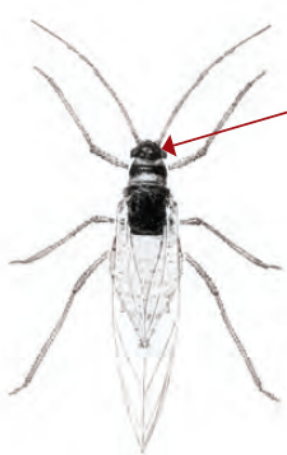
(Image 8)



# Cabbage aphid

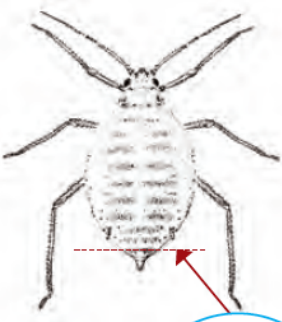
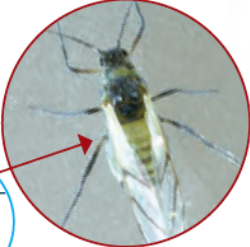
id

adult



Dark head and thorax

Dull grey-green in colour



Tips of siphuncles do not reach base of cauda

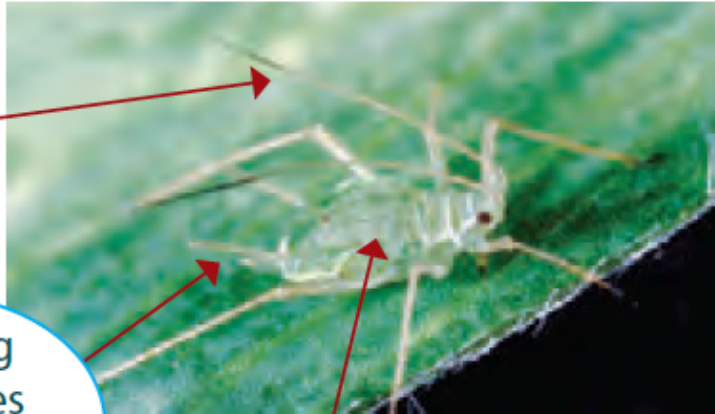


## Blue green aphid

Long antennae

Very long siphuncles (relative to pea aphid)

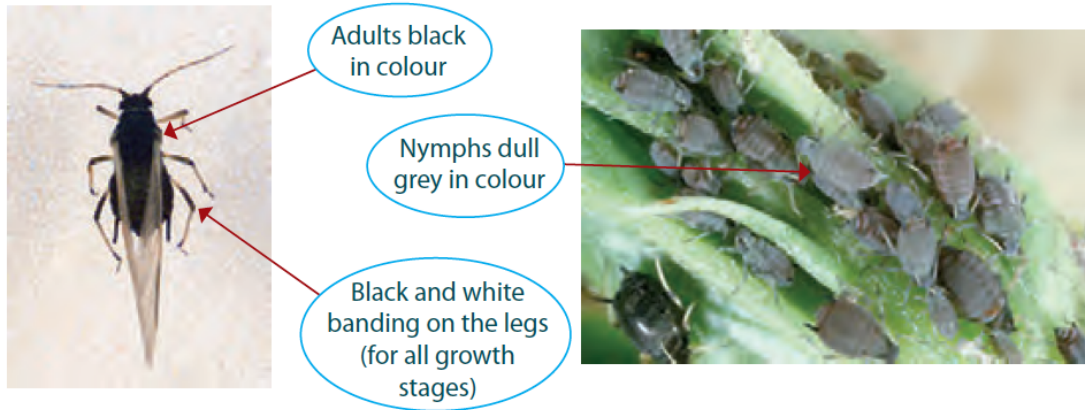
Blue-green to grey-green in colour





# Cowpea aphid

## Cowpea aphid



## Acknowledgements

This guide was produced by **cesar** to assist in the field identification of flying aphids, particularly the green peach aphid. We gratefully acknowledge the contributions of the following organisations for photographs and materials:

- Department of Food and Agriculture Western Australia (DAFWA) for a photograph of the Green peach aphid
- Grains Research and Development Corporation for extracts from the I Spy Manual
- The National Bureau of Agriculturally Important Insects, Bangalore 560 024, Karnataka, India, for a photograph of the Turnip aphid.
- South Australian Research and Development Institute (SARDI) for photographs of green peach aphid, cabbage aphid and blue green aphid

August 2014