



# Insect Identification Check





# 1. Found in barley



**1A Brown  
lacewing  
adult**



**1B Armyworm larva**



# 1. Found in barley



**1C Striped ladybeetle adult**



**1E Damsel bug adult (Nabis)**



**1D Green lacewing adult**



## 2. Found in flowering-podding canola



**2A Cabbage white butterfly larva**



**2B Diamondback moth larvae  
and pupae**

## 2. Found in flowering-podding canola



**2C Hoverfly adult**



**2D *Apanteles* cocoons (CWB larva)**

## 2. Found in flowering-podding canola



**2E *Hippodamia* ladybeetle**



**2F Looper larva**





## 3. Found in flowering soybeans



**3A Looper larva**



**3B Redbanded shield bug**  
*(Piezodorus)*



## 3. Found in flowering soybeans



**3C Glossy shield bug**



**3D Brown mirid adult and nymph**





## 3. Found in flowering soybeans

3E Spined predatory shield bug  
(*Oechalia*)



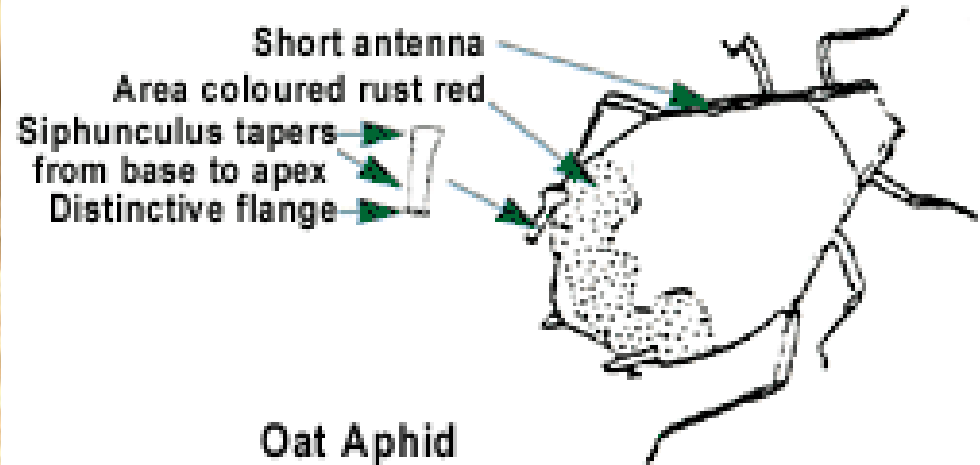
3F Whitefly nymphs (*Bemisia*)



3G Helicoverpa larva



## 4. Which species of aphid?



**4A ex base of barley**  
**Rice root aphid**



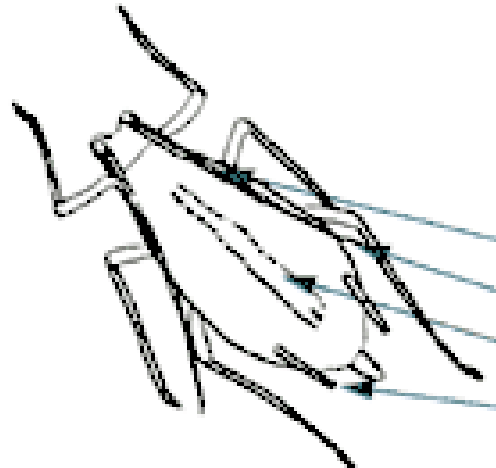
**4B ex base of barley**  
**Oat aphid (*R. padi*)**





## 4. Which species of aphid?

Rose Grain Aphid



- Dusky apices to antenna segments
- Antenna reaching beyond base or siphunculi
- Darker green mid-dorsal stripe
- Long pale siphunculus



**4C ex sowthistle**  
**Sowthistle aphid**



**4D ex leaves in barley** Rose grain aphid





## 4. Which species of aphid?



**4E ex canola**  
**Cabbage aphid**



**4F ex canola**  
**Turnip aphid**



## 5. Other insects



**5A Orange caterpillar parasite  
(*Netelia*)**



**5B Aphids have been parasitised**



## 5. Other insects



**5C Rove beetle (Staphylinid)**



**5D Rutherglen bug adults**



**5E Ladybeetle larvae**



